

ARKANSAS RIVER TRAIL MAP



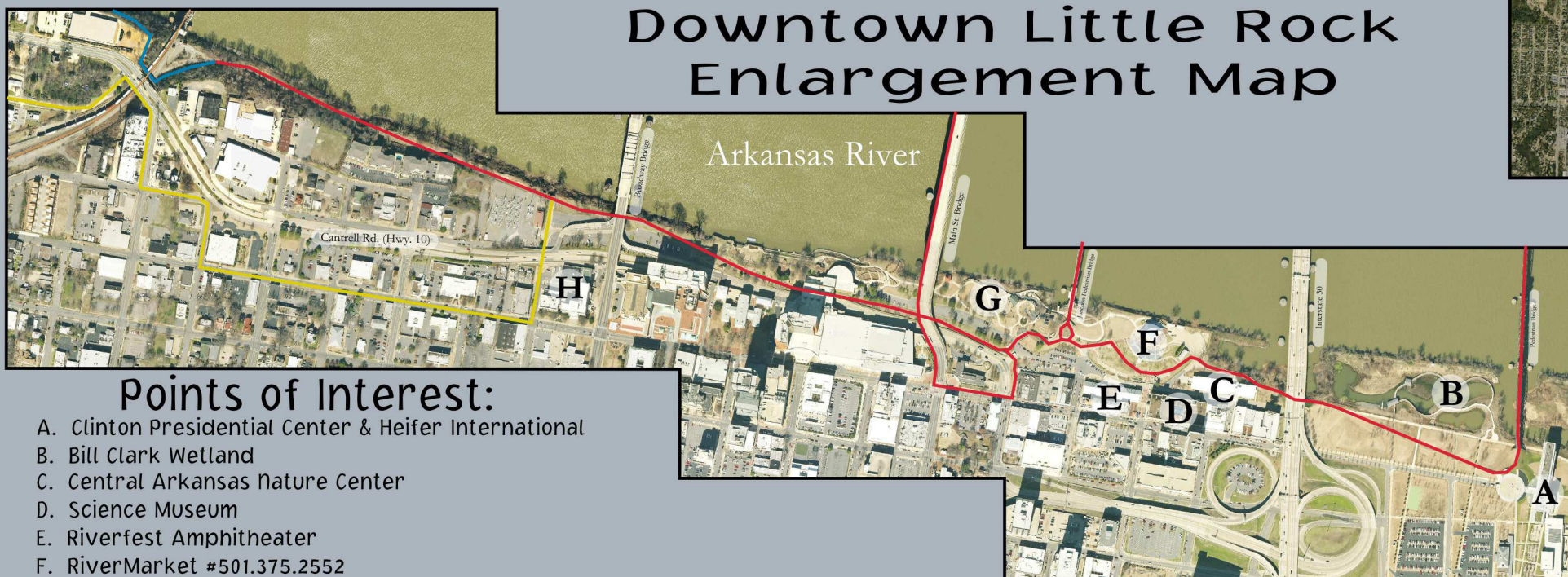
Points of Interest:

- | | |
|-----------------------------------|--|
| 1. Episcopal Collegiate School | 9. Cooks Landing |
| 2. Junior Deputy Ball Field | 10. Burns Park |
| 3. Rebsamen Golf Course | 11. Emerald Park |
| 4. Murray Park & Murry Lock & Dam | 12. Riverview Park |
| 5. Big Dam Bridge | 13. NLR Riverfront Park & Alltel Arena |
| 6. Two Rivers Park | 14. LR Riverfront Park & RiverMarket District |
| 7. Maumelle Park | 15. Clinton Presidential Center & Heifer International |
| 8. Pinnacle Mt. State Park | |

Map Legend

- | | |
|--------------------------|-------------------------------|
| Arkansas River Trail | Parking & Trail Access Points |
| Proposed River Trail | Restrooms |
| Temporary Detour Trail | Trail Information |
| On-Road Trail | |
| Trail Under Construction | |
| Roadways | |
| Railroad | |

Downtown Little Rock Enlargement Map



Points of Interest:

- Clinton Presidential Center & Heifer International
- Bill Clark Wetland
- Central Arkansas Nature Center
- Science Museum
- Riverfest Amphitheater
- RiverMarket #501.375.2552
- Riverfront Park & Peabody Adventure Park
- City Hall



For more information, contact
Little Rock Parks & Recreation
 500 West Markham, Room 108
 Little Rock, AR 72201
www.lrp.org / 501.371.4770
 Map last updated 11/13/12
 Map Scale 1" = 4000' (11x17)

